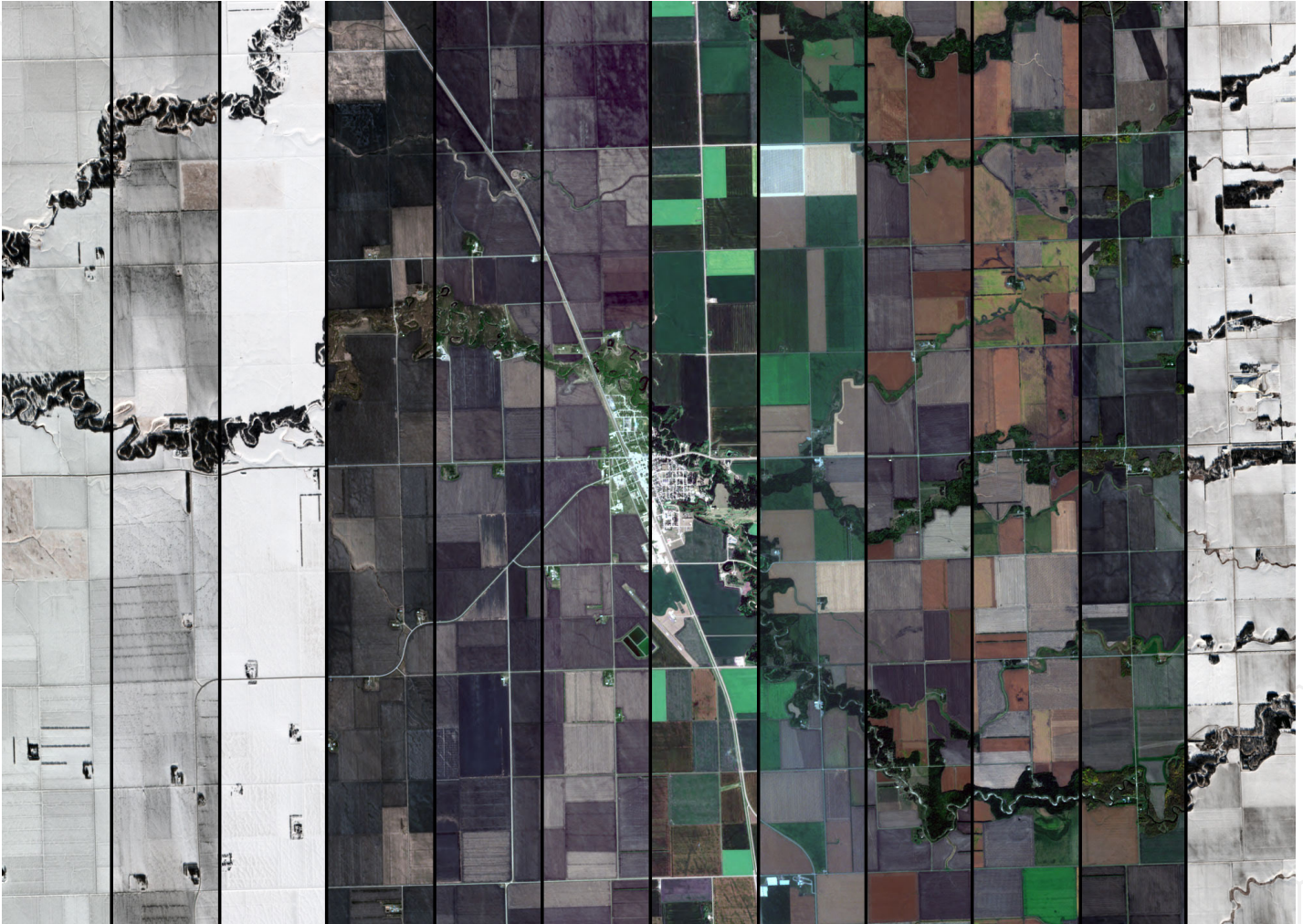


USE CASE:

Seasonal Farm Input Demand Modeling

Datasets

Descartes Labs field boundaries |
corn acreage | soybean acreage |
historical crop prices | internal
customer data



Copernicus Sentinel data 2020

Summary

Given historical supply and demand data and the total acreage of soy and corn during the current growing season, customers can determine regional demand for farm inputs including seeds, feed, chemicals, equipment and energy. The approach uses multiple spatial and non-spatial datasets, including key internal customer supply and demand data.